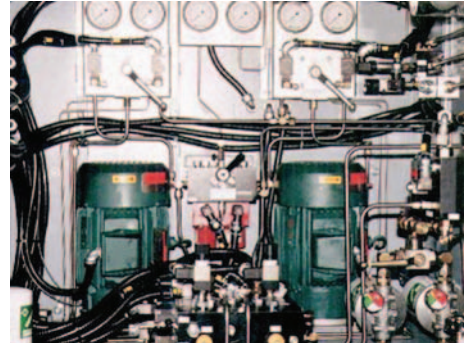


»» Control Systems

SAG Mill Brake Controls: »»»

Hydraulic power units with three braking modes are available for sag mill brake control. These units allow for gradual application of braking torque for controlled stopping, as well as quick braking for use during inching and creeping modes. Power units feature a high degree of filtration, a high capacity pump, and a lockable cabinet to protect the controls.



Hoist & Conveyor Controls: »»»

- »» hydraulic or pneumatic
- »» simple on/off systems
- »» quick apply and/or release systems
- »» digital or ramped torque control
- »» full proportional control
- »» back-up and redundant systems
- »» any combination of the above

Drum & Disc Brake Controls: »»»

- »» AC/DC voltages
- »» quick apply and/or release systems
- »» RC time delay control
- »» full proportional control
- »» ramped control on release and/or apply
- »» fail safe ramp control
- »» any combination of the above

